

# 5 Ways To Use

# Your RSC

Are you making the most of your RSC service?



## 1 - One-to-One Consultations

“I’d like to review our e-learning strategy”

Make the most of your JISC Regional Support Centre with a visit from one of our e-learning advisors.

Our advisors are able to provide support on a wide range of e-learning issues facing your sector. Whether you are bidding for funding, reviewing your e-learning strategy or you want to benchmark your organisation, our advisors can help.

“I’d like help to bid for funding”

Stimulating and supporting innovation in learning

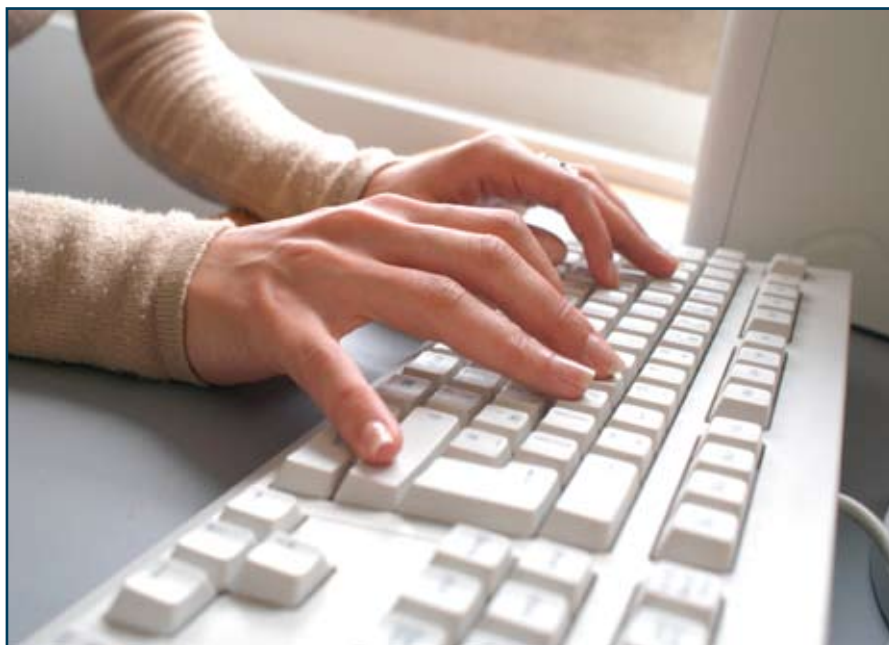
They have access to various tools and resources that can help you to move your organisation forward. They can also put you in touch with others that have experience of similar problems and can help. Past users have praised them as a ‘critical friend’.

“How are others solving this problem?”

A one-to-one visit can quickly be arranged. Contact our Support Line via [support@rsc-yh.ac.uk](mailto:support@rsc-yh.ac.uk) or 0113 343 1000 with suitable dates and we will be in touch.

Each supported organisation is entitled to at least one visit per year - have you had yours?

## 2 - Individual Sector Support



Each sector has a dedicated e-learning advisor who keeps abreast of all the latest issues in that sector, from new government initiatives to new funding streams.

Our advisors can provide advice to answer any queries you may have specific to your sector.

Previous enquiries include:

### Further Education

- Improving sustainability
- Help with Generator tool
- Approaches to staff development
- Implementing federated access management

### Higher Education

- Sharing information between HE and HE in FE organisations

## 3 - Support for Your Job Role

### Management

As well as strategy support, we provide support in other managerial areas such as legal issues and VLE and e-portfolios help.

### Technical

The Technical support package

“Which e-portfolio is best for us?”

includes funding subscriptions to Books24x7 as well tailored events and webinars. We offer Fluke Network Analysis and Wireless Network Analysis.

Those with a technical role can join the Technical Discussion List for support from colleagues: RSC-YH-TECH@JISCMail.AC.UK

### Learning Resources

We can help with issues such as online repositories, copyright, federated access management, and information skills good

“How can I promote resources in the library?”

practice. Join the Learning Resource Discussion List: RSC-YH-LRC@JISCMail.AC.UK

### Accessibility

Our Excellence in Inclusivity forum supports this area. We provide information on legal requirements and approaches to embedding inclusive learning.

### Professional Development

We can help with CPD requirements and initial teacher training. We have the latest

“What is Web 2.0 and should I care?”

#### Adult & Community Learning

- Facilitate sharing between Local Authorities
- Help with social media strategy

#### Work Based Learning

- LIG funding bid support
- Curriculum planning and resources advice

#### Specialist Colleges

- Support for developing a VLE

So, go ahead, ask anything! You can contact your e-learning advisor via our Support Line: support@rsc-yh.ac.uk or 0113 343 1000.

information on eCPD training programmes and work with Centres of Excellence in Teacher Training (CETT).

#### Training

We broker training to support current key agendas. In 2008/09, we brokered training in assistive technologies and Mac technical support.

Let us know your needs by emailing support@rsc-yh.ac.uk..

### Did you know?

In 2008/09, our 7 e-Learning Advisors provided 184 consultations to supported learning providers in the region. Did they support you?

# 4 - Reference & Inspiration

Where do you start? Or where do you find out more? We aim to provide the information you need, as well as the inspiration to try new things out. We let you know current practice as well as looking at how emerging technologies can be used in learning.

#### Case Studies

We provide case studies of good practice from our region for [www.excellencegateway.org.uk](http://www.excellencegateway.org.uk). Find out what others are doing.

#### e-Learning Information

Access resources on our learning platform from our programme of events.

“How can I use technology?”

#### Video Resources

Excellence in Inclusivity is our accessibility website containing videos of learners using technology to enhance their studies.

#### e-Learning News

JISC RSC YH Exchange is our blog with all the latest news in e-learning. Sign up for the fortnightly e-bulletin by emailing support@rsc-yh.ac.uk.

And look out for further developments this year with our new project, RSC TV!

Access all the above from our website: [www.rsc-yh.ac.uk](http://www.rsc-yh.ac.uk).

“I’d like to try something different!”



## Checklist

- 1. Arrange a visit from my e-learning advisor by emailing [support@rsc-yh.ac.uk](mailto:support@rsc-yh.ac.uk) or phoning 0113 343 1000
- 2. Contact my e-learning advisor with a quick query by emailing [support@rsc-yh.ac.uk](mailto:support@rsc-yh.ac.uk)
- 3. Join the mailing list for my role group or the e-bulletin mailing list by emailing [support@rsc-yh.ac.uk](mailto:support@rsc-yh.ac.uk)
- 4. Visit the case studies page on [www.rsc-yh.ac.uk/casestudies.asp](http://www.rsc-yh.ac.uk/casestudies.asp) for inspiration
- 5. Register my email address for notification of events I'd like to attend at [www.rsc-yh.ac.uk/notifications.asp](http://www.rsc-yh.ac.uk/notifications.asp)

## Contact Us

JISC RSC YH  
University of Leeds  
44 Clarendon Road  
Leeds  
LS2 9PJ

Tel: 0113 343 1000  
Fax: 0113 343 4652  
Email: [support@rsc-yh.ac.uk](mailto:support@rsc-yh.ac.uk)

[www.rsc-yh.ac.uk](http://www.rsc-yh.ac.uk)

Front page image: [www.wordle.net](http://www.wordle.net)

# 5 - Events, Forums & Networking

Have you taken advantage of our events programme? As well as gaining knowledge, delegates find the networking opportunities with colleagues in similar roles to be useful. Save time and money by learning from others' experience.

Our events range from informal forum meetings to major conferences. Many are free of charge.

We want to encourage sharing and collaboration. Events involve key presentations on main issues and workshops outlining examples of good practice from around the region.

You can register your email address to be notified when bookings open for each event via our website: [www.rsc-yh.ac.uk/notifications.asp](http://www.rsc-yh.ac.uk/notifications.asp)

## EventsList 2009/2010

"Where can I learn from others' experience?"

### September - December 2009

Pathfinder ICT Project Launch

LRC Conference

Learning Technologists Forum

Moodle User Group

Excellence in e-Learning Forum: e-safety & e-security

Technical Webinars

Taming the Mac

### January - March 2010

e-Learning in HE Conference

Moodle User Group

Excellence in Inclusivity Forums

Excellence in e-Learning Forum: Green IT & Sustainability

Excellence in Infrastructure

APEL event

### April - July 2010

Moodle User Group

Excellence in e-Learning Forum: e-Assessment

Annual e-Learning Conference

## Did you know?

In 2008/09, we hosted 40 events that were attended by 577 delegates. Most were free of charge - were you there?